

# MAYOR OPENS £8,000 CRICKLEFIELD TRACK

AT 2.38 at the Cricklefield Playing Field on Saturday two scissor-snips parted a broad white tape and opened the door to potential success for many athletes in the Borough. The new athletic track had been officially opened.

Wielder of the scissors was a man who, for many years has worked hard in establishing sporting facilities in Ilford, the new Mayor, Alderman John Barker.

Speaking to a crowd of several hundreds, Alderman Barker said that when the first track was opened in 1925 a figure of £320 was mentioned, but the cost of the present track was something like £8,000.

He went on, "The old track suffered somewhat through lack of attention and I hope it will not be the case with the track to-day. Among our plans for the future will be the provision of dressing accommodation and an indoor cricket school."

Concluding, Alderman Barker expressed the hope that the track would become the centre of sport in Ilford and that one day the Essex Championships would be held there.

Following the opening, a parade of athletes around the track was led by the National 80-metres champion, Jean Desforges, just returned from her New Zealand trip.

The first race, started by Alderman Barker, was an 880 yards scratch and the honour of becoming the first winner went to Alan Perkins.

A strong wind and an overcast sky kept the crowds away from the meeting and the wind also prevented the runners from returning any startling times.

Most successful competitor of the day was Ilford A.C.'s, Christine Wheeler. In the Essex ladies' championship events, she won the shot put, was second in the long jump, and was third in the 100 yards final.

In the Ilford A.C. v. Chelmsford A.C. match, Ilford won by 50 points to 27.

## RESULTS.

880 yards—1, A. Perkins, 2 mins. 7 3-5ths secs.; 2, R. Betts; 3, H. Hubbard.

Essex Women's Senior 100 yards—1, J. Desforges, 12.0 secs.; 2, M. Brian; 3, C. Wheeler.

Senior Men, 440 yards (Ilford A.C. v. Chelmsford)—1, H. Wood-

house (Ilford) A.C., 55.7 secs.; 2, M. Hampson (Chelmsford); 3, D. Patten (Ilford).

Senior Throwing the Javelin—1, H. R. B. Turnbull (171ft. 11ins.); 2, R. Betts (117ft. 4ins.); 3, F. Foster (111ft.).

Essex Women's Senior Shot Put—1, C. Wheeler (holder), (Ilford), 30ft. 11ins.; 2, J. Desforges (Essex), 27ft. 10ins.; 3, R. Welch (Essex), 27ft. 3ins.

Inter-Schools Boys' Relay—1, Mayfield, 49 mins. 7 secs.; 2, Beal; 3, Ilford County High; 4, Loxford. Ilford Youth Clubs' 220 yards Championship—1, G. Butler (Beehive), 25.4 secs.; 2, Eldersfield (Squires); 3, Ansell (Co-operative).

Youth Girls' 150 yards Championship—1, A. Orme, 15.5 secs.; 2, R. Lynn; 3, S. Saunders.

Shot Put (Ilford v. Chelmsford)—1, H. R. B. Turnbull (Ilford), 40ft. 2 1/2 ins.; 2, Brown (Chelmsford), 28ft. 6 ins.; 3, R. Betts (Ilford), 28ft. 0 1/2 in.

Essex Women's Junior Long Jump—1, J. Cottage (Essex), 15ft. 9 1/2 ins.; 2, S. Richardson (S.E.E.T.C.), 15ft. 4 1/2 ins.; 3, G. Gallow, 14ft. 6 ins. New county record.

Ilford A.C. Men's Junior Javelin—1, C. Taylor, 151ft. 10ins.; 2, G. Carr, 121ft. 2ins.; 3, B. Buxton, 89ft. 7ins.

Inter-Schools Girls' Relay—1, S.E.E.T.C., 55 secs.; 2, Wanstead C.H.S.; 3, Downshall; 4, Barking Abbey.

Steeplechase (Ilford v. Chelmsford)—1, A. Thomas (Ilford), 3 mins. 54.8 secs.; 2, H. Hubbard (Ilford); 3, Pullerton (Chelmsford), 220 yards—1, A. Ford (Ilford A.C.), 23.6 secs.; 2, D. Todd (Ilford A.C.); 3, Taylor (Chelmsford).

Ladies' 1 Mile Walk—1, A. Douglas (Cambridge Harriers), 9 mins. 26.4 secs.; 2, H. Gibbins (Ilford); 3, P. Matt (Ilford).

Men's 100 yards (Ilford v. Chelmsford)—1, O. Ward (Ilford), 11.1 secs.; 2, Coe (Chelmsford); 3, Brown (Chelmsford).

Men's Junior Mile Medley Relay—1, Ilford "A", 3 mins. 59.8 secs.; 2, Chelmsford; 3, Ilford "B."

Ilford A.C. Men's Senior Long Jump—1, A. Ford (20ft. 1in.); 2, D. Todd (19ft. 1in.); 3, G. Appleboam (17ft. 10ins.).

Two Mile Walk—1, Essex Beagles (1st, 2nd, 5th); 2, Ilford A.C. (3rd, 4th, 8th).

Ladies' Senior Relay (Ilford v. Chelmsford)—1, Ilford A.C. (52 mins. 9 secs.); 2, Chelmsford A.C.

Ilford A.C. Ladies' Senior Discus—1, D. Clifton (89ft. 8ins.); 2, C. Wheeler (70ft. 4ins.); 3, F. Hatt (61ft. 10ins.).

Ilford A.C. Men's Junior Long Jump—1, C. Taylor (20ft. 3 1/2 ins.); 2, G. Whittle (18ft. 9 1/2 ins.); 3, G. Holmes (16ft. 6 1/2 ins.).

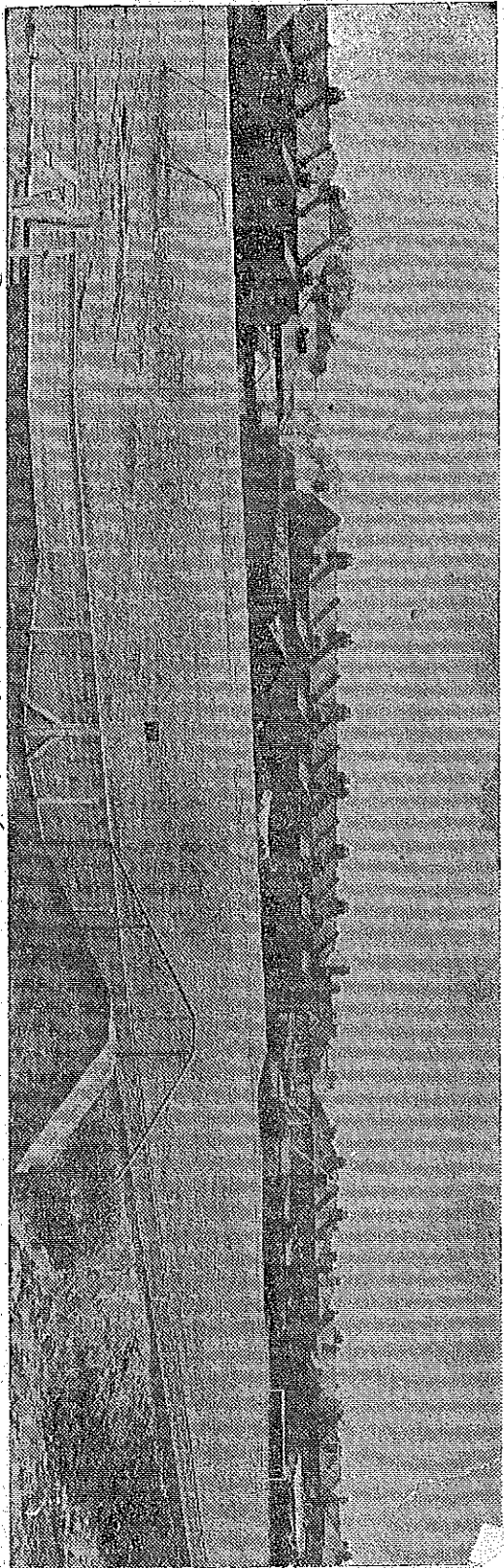
Essex Women's Senior Long Jump—1, J. Desforges (Essex L.A.C. holder), (17ft. 5 1/2 ins.); 2, C. Wheeler (Ilford), 16ft. 1 1/2 ins.; 3, A. Cashmore (Ilford), 16ft. 3 1/2 ins.

Men's Senior Mile Medley Relay—1, Ilford A.C. (3 mins. 56.2 secs.); 2, Chelmsford A.C.

ILFORD

RECORDED.

1. 6. 50.



The desolate brickfield of the early 20th century that was Gricke-  
field is replaced in 1952 by the level turf of Ilford's athletic and  
sports ground.

3, Bloomfield Crescent,

ILFORD,

ESSEX.

17th, May, 1950.

Dear Member,

A new chapter in the history of our Club commences with the opening of the Cricklefield Track on 27th May. If you are not competing or acting as an official at the athletic meeting which follows the opening by our Vice President, His Worship the Mayor of Ilford, Alderman John Barker, there are still ways in which you can help the Club to make the occasion successful and memorable.

There will be a parade of athletes immediately after the Mayor has declared the track open. This provides a magnificent opportunity for a demonstration of Ilford Athletic Club strength to the civic authorities and townspeople. If you regard yourself as an active athlete you can make this really effective by your presence and participation in the parade. Track kit and/or track suits will be the order of the day. If you can stay on to criticise and maybe applaud the efforts of those actually competing, so much the better, but please do your best to attend the parade - at whatever cost to your personal Whitsun holiday arrangements. The Chief Steward will want you to be ready by 2.15 p.m. latest.

If you are like me, and only look on in athletics nowadays, please come as a spectator and enable us to point with pride to the array of old timers and wellwishers whose splendid support has always been a feature of the work of the Ilford A.C.

Lastly bring your relatives, friends and neighbours to swell the throng and share the pleasure and satisfaction you will derive in seeing the dream of Cricklefield at last become a reality.

Yours sincerely,

Chris, Woodyard.

# ILFORD ATHLETIC CLUB

OPENING OF CRICKLEFELD TRACK - SATURDAY, 27th MAY, 1950

<u>EVENT 1</u>	880 yds. Scratch I.A.C.	Time mins. secs.
	1. R. Perkins	2 7-3/5
	2. R. Betts	
	3. H. Hubbard	

<u>EVENT 2</u>	440 yds. Match	
	1. H. Woodhouse I.A.C.	55.7
	2. M. Hampson Chelmsford	
	3. D. Patton I.A.C.	
	4. P.B. Wardlow Chelmsford	

<u>EVENT 3</u>	100 yds. Ladies E.C.W.A.A.A. Heats	
Heat 1.	1. P. Green I.A.C.	12. 8
	2. M. Morgan S.E. Essex Tech.	
	3. P. Theobald Chelmsford	
Heat 2.	1. J. Desforges Essex L.A.C.	12. 3
	2. D. Phillips " "	
	3. P. Whight Wan. C.H.S.	
Heat 3.	1. P. Benson L.O.A.C.	12. 5
	2. D. Clutton I.A.C.	
	3. B. Hughes Wan. C.H.S.	
Heat 4.	1. G. Wheeler I.A.C.	12. 7
	2. J. Penn Essex L.A.C.	
	3. D. Sack Chelmsford	
Heat 5.	1. A. Crane I.A.C.	12. 5
	2. J. Buck Chelmsford	
	3. B. Barret Essex L.A.C.	
Heat 6.	1. M. Bryan Essex L.A.C.	12. 5
	2. K. Andrews Gravesend	
	3. A. Cashmore Wan. C.H.S.	

<u>EVENT 4</u>	Javelin - Ilford A.C. <i>Championship</i>	Distance
	1. B. Turnbull	171'11"
	2. R. Betts	117'4"
	3. F. Foster	111'0"
	4. H. Hubbard	100'8"
	5. A. Thomas	82'1"
	6.	

<u>EVENT 5</u>	Shot Put - E.C.W.A.A.A. Championship (Ladies)	
	1. C. Wheeler I.A.C.	30'11 1/2"
	2. J. Desforges Essex L.A.C.	27'10 1/2"
	3. R. Welch " "	27'3"
	4.	
	5.	

EVENT 6 4 x 110 yds. Relay Inter-Schools Invitation

		Time
1.	Mayfield Sec.	49.7
2.	Beal Grammar	
3.	Ilford C.H.S.	
4.	Loxford Sec.	

EVENT 7 220 yds. (Semi-finals) Ilford Youth Club Champs.

Heat 1.	1. G. Butler	Beehive	25.8
	2. Elderfield	Squires	
	3. L. Hutchings	All Saints	
Heat 2.	1. R. West	Chadwell	26.7
	2. Ansell	Cooperative	
	3. Drumm	Frenford	
Heat 3.	1.		

EVENT 8 150 yds. (Semi-finals) Ilford Youth Club Champs. (Girls)

Heat 1.	1. A. Crane	15.5
	2. R. Lynn	
	3. S. Saunders	

EVENT 9 Shot Put - Men (Senior) - Match

		Distance
1.	R. Turnbull	I.A.C. 40'2 $\frac{1}{2}$ "
2.	Brown	Chelmsford 28'5"
3.	R. Betts	I.A.C. <del>28'5"</del> 28'0 $\frac{1}{2}$ "
4.	Beeton	Chelmsford 26'5"

EVENT 10 100 yds. (semi-finals) E.C.W.A.A.A. Champs.

Heat 1.	1. Desfordges	Essex L.A.C.	12.1
	2. G. Wheeler	I.A.C.	
	3. M. Bryan	Essex L.A.C.	
Heat 2.	1. D. Phillips	Essex L.A.C.	12.2
	2. A. Crane	I.A.C.	
	3. J. Penn	Essex L.A.C.	

EVENT 11 Long Jump - E.C.W.A.A.A. Ladies Champs (Junior)

		Distance
1.	J. Cottage	Essex L.A.C. 15'9 $\frac{1}{2}$ "
2.	S. Richardson	S.E. Essex Tech. 15'4 $\frac{1}{2}$ "
3.	G. Gallow	" " 14'6"

EVENT 12 Javelin - I.A.C. Champs. - Men (Junior)

1.	Taylor	151'10"
2.	Carr	121'2"
3.	Buxton	89'7"
4.		
5.	(5 Competitors - no others Returns)	

EVENT 13 4 x 110 yds. Relay Inter-Schools (Girls)

		Time
1.	South East Essex Tech.	55.0
2.	Wanstead C.H.S.	
3.	Downshall	
4.	Barking Abbey	

EVENT 14  $\frac{5}{4}$  Mile Steeplechase - Match - Men (Senior)

1.	A. Thomas	I.A.C.	3.54.8
2.	H. Hubbard	I.A.C.	
3.	Fullerton	Chelmsford	
4.	R. Betts	I.A.C.	

<u>EVENT 15</u>	100 yds. (finals) E.C.W.A.A.A. Championships		
			Time
	1. J. Desforges	Essex L.A.C.	12. 0
	2. M. Bryan	" "	
	3. C. Wheeler	I.A.C.	
	4. D. Phillips	Essex L.A.C.	
	5. J. Penn	" "	
<u>EVENT 16</u>	220 yds. Men (Senior) - Match		
	1. Ford	Ilford	23. 6
	2. Todd	"	
	3. Taylor	Chelmsford	
	4. Hampson	"	
<u>EVENT 17</u>	220 yds. (final) Ilford Youth Clubs (Boys)		
	1. Butler	Beehive	25. 4
	2. Elderfield	Squires	
	3. Ansell	Co-operative	
<u>EVENT 18</u>	150 yds. (final) Ilford Youth Clubs (Girls)		
	1. See Event 8		
	2.		
	3.		
<u>EVENT 19</u>	1 Mile Walk (Ladies) Invitation		
	1. A. Douglas	Cambridge	9.26.4
	2. H. Gibbins	I.A.C.	
	3. P. Hatt	I.A.C.	
	4.		
<u>EVENT 20</u>	100 yds. Men (Senior) Match		
	1. Ward	I.A.C.	11. 1
	2. Coe	Chelmsford	
	3. Brown	"	
	4. Appelboam	I.A.C.	
<u>EVENT 21</u>	1 Mile Medley Relay Men (Junior) - Match		
	1. Ilford		3.59.8
	2. Chelmsford		
	3. Ilford "B"		
<u>EVENT 22</u>	Long Jump F.A.C. Champs. Men (Senior)		
	1. Ford		Distance
	2. Todd		20'11"
	3. Appelboam		19'11"
			17'10"
<u>EVENT 23</u>	2 Mile Walk Invitation Team Race		
	1. Essex Beagles		16. 2. 0
	2. Ilford A.C.		
	3.		
<u>EVENT 24</u>	4 x 110 yds. Relay Ladies (Senior) Match		
	1. Ilford A.C.		52. 9
	2. Chelmsford		
<u>EVENT 25</u>	Discus - Ilford A.C. Championship (Ladies)		
	1. Glutton		89'8"
	2. C. Wheeler		70'4"
	3. P. Hatt		61'10"
	4. Arnold		60'7"
	5. Skinner		54'4"
	6. Gibbins		48'10"

EVENT 26

Long Jump - Ilford A.C. Champs. Men (Junior)

		Distance
1.	Taylor	20'3 $\frac{1}{2}$ "
2.	Whittle	18'9 $\frac{1}{8}$ "
3.	Holmes	16'6 $\frac{1}{8}$ "
4.	Maitland	16'3 $\frac{1}{2}$ "

EVENT 27

Long Jump - E.C.W.A.A.A. Champs. (Ladies)

1.	J. Desforges	Essex L.A.C.	17'5 $\frac{1}{8}$ "
2.	C. Wheeler	I.A.C.	16'11 $\frac{1}{4}$ "
3.	A. Cashmore	I.A.C.	16'3 $\frac{3}{4}$ "

EVENT 28

1 - Mile Medley Relay Men (Senior) - Match

1.	Ilford	3. 56. 2
2.	Chelmsford	